

# What is New in The 2010 Elections?



By: Commissioner Rene V. Sarmiento

---

**What is New ?**

---

# A. Registration

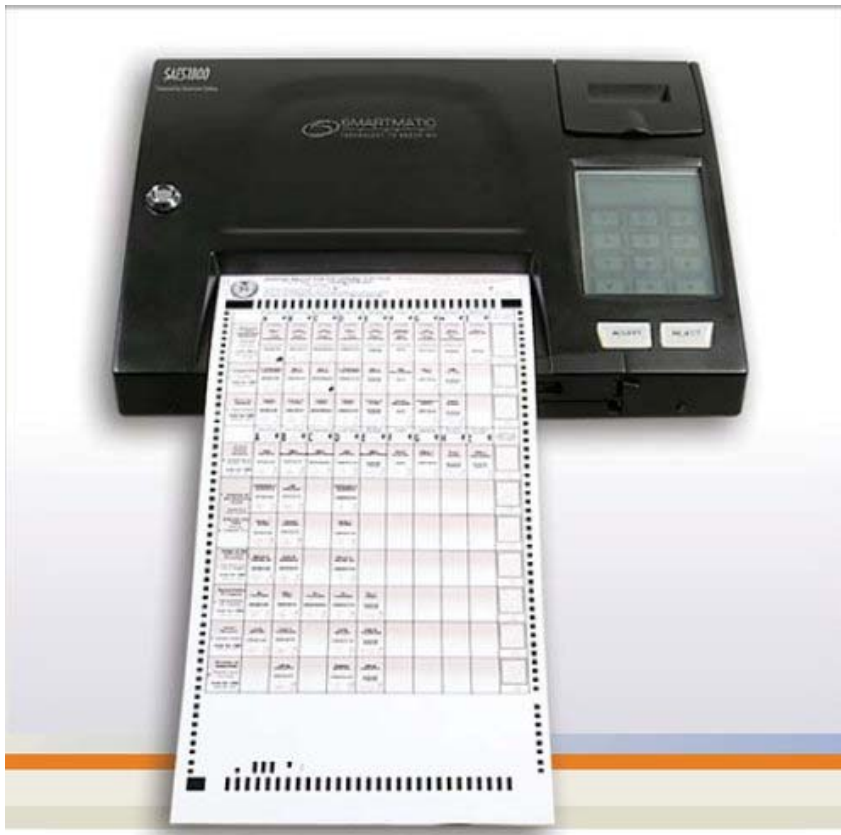


1. Biometrics Capture

## 2. Satellite/Mobile Registration Centers

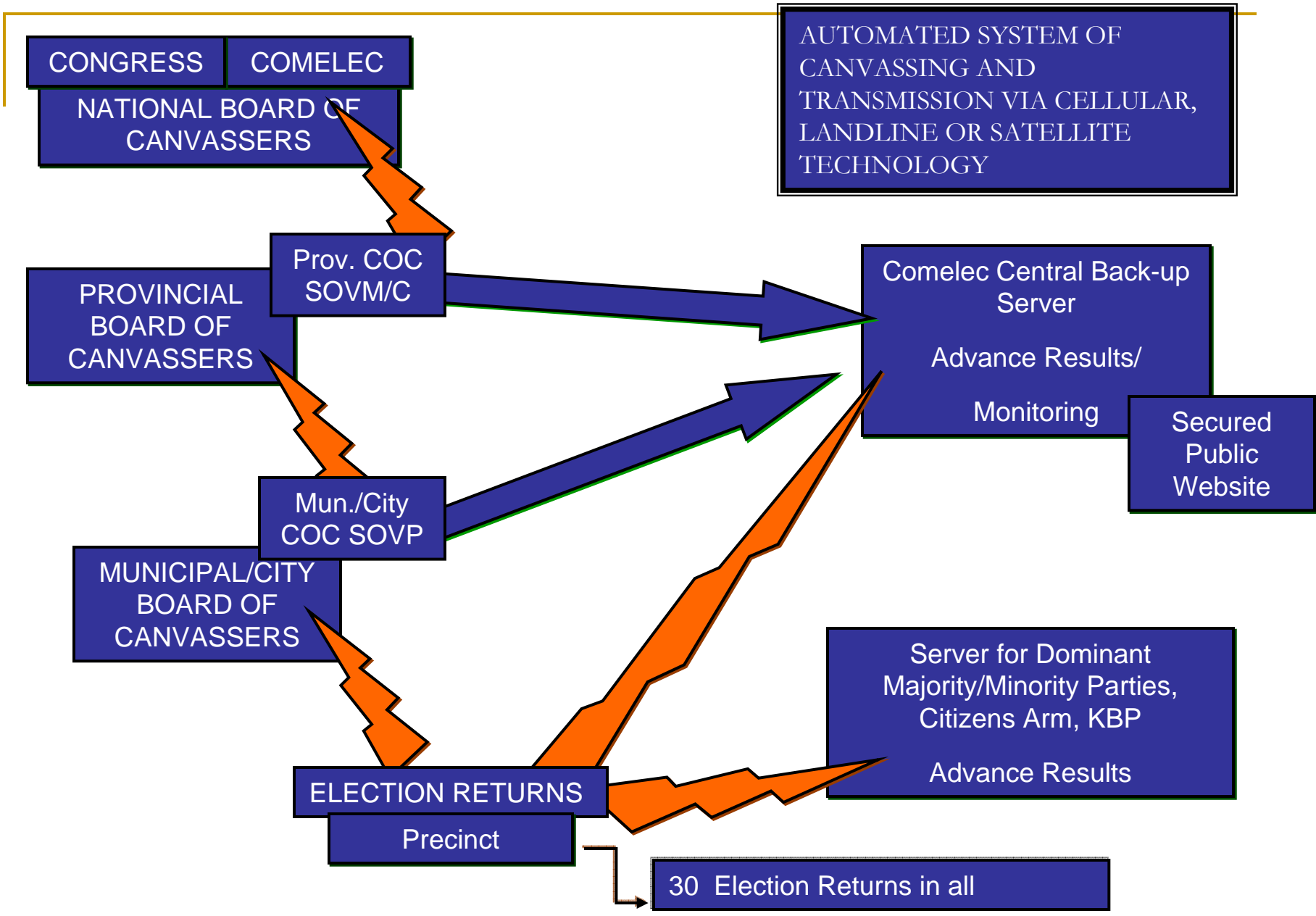


# B. Automated Election System/Poll Automation



1. Use of Precinct Count Optical Scan (PCOS) Machine
2. Voting (voting hours, use of paper ballots with ovals circles, shading)

- 
3. Counting (By PCOS Machine, generation of 30 election returns)
  4. Transmission
  5. Canvassing (by consolidation and canvassing server)
  6. Clustering of Precincts and 6 BEI members
  7. Days to get the results
-



# C. Detainees





# H. Energized Youth and NGO Community/Private Sectors

**register. vote. transform.**



If you are a Filipino citizen, 18 years old on the day of the elections, and resident of the Philippines for at least 1 year, you may register @ the local COMELEC in the city or municipality where you will be voting. Bring a valid ID, fill up and submit the application form (which can now be downloaded from the COMELEC website), and have your biometrics digitally captured by the local election officer.

For more information, visit: [www.comelec.gov.ph](http://www.comelec.gov.ph) · [firsttimevotersproject.wordpress.com](http://firsttimevotersproject.wordpress.com)  
[www.tf2010.slb.ph](http://www.tf2010.slb.ph) or text FTV @ 0920-7392102 / 0915-1121019



---

# I. New Legal Parameters

- A. Filing of COCs
  - B. Rules on Lawful Campaign
  - C. Protests (Rules on appreciation out, new rules in)
-

---

## II. New Scenarios that cause concern among voters

- A. Mechanical Breakdown of PCOS machine.
  - B. Failure of elections
  - C. Commercial voting
-

# A New National Attitude Emerging

- A. Attitude of gratefulness for this opportunity/blessing; Attitude of Hope
- B. A Change Most Welcome
- C. Work plus Prayer

