

# **ENERGY EFFICIENCY**

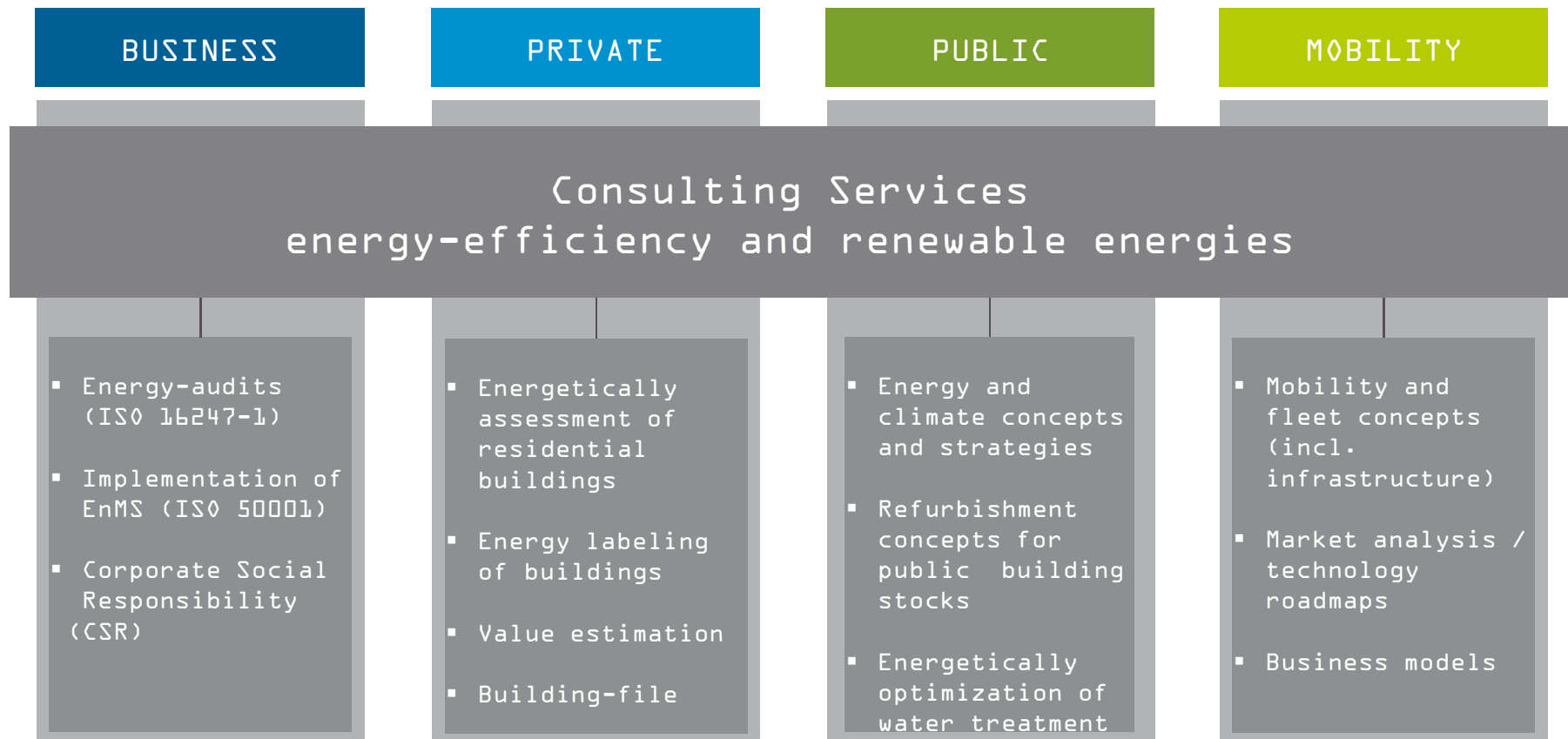
## **- SOME PRACTICAL EXAMPLES**

October 2016

## COMPANY PROFILE

- Foundation: 1996, since 2007 member of TÜV NORD GROUP
- Turnover 2015: 4.9 million € (60 employees)
- Main focus: energy efficiency / renewable energies
- Key services: Consulting / EPCM Services
- Regional focus: Europe (Central-Asia, Latin America)

## SERVICE-PORTFOLIO



# SERVICE-PORTFOLIO

BUSINESS

PRIVATE

PUBLIC

MOBILITY

Consulting Services

Support Services

Engineering, Procurement, Construction, Monitoring (EPCM)

EPCM-Services for

- Lighting
- Heating / cooling
- CHP technology
- Compressed air
- ...

Construction and  
refurbishment  
supervision



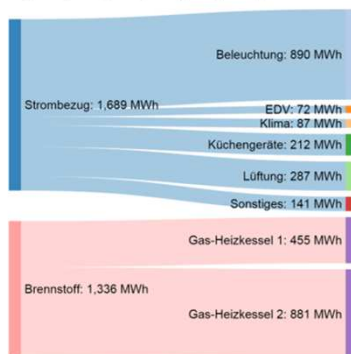
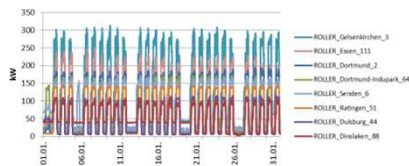
EPCM concepts for  
public clients



EPCM-Services for  
private and public  
car fleets:

- Vehicle procurement
- Charging infrastructure

## EXAMPLE I - TESSNER GROUP, GELSENKIRCHEN



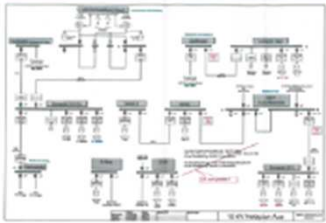
21.09.20

16

Folie 5

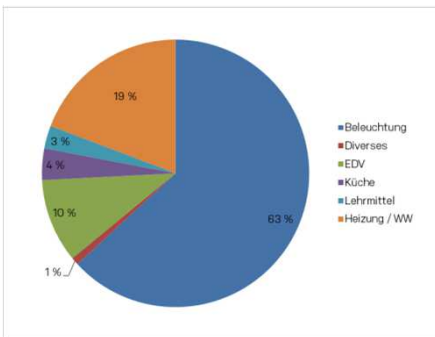
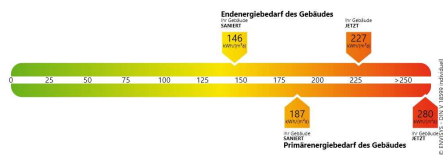
Project	Energy Audit Tessner Holding KG
Duration	08/2015 - 12/2015
Client	Roller GmbH & Co. KG
Content	<ul style="list-style-type: none"> <li>Comprehensive Energy Audit (EN DIN 16247-1)</li> <li>Multi-Site-approach at 20 representative locations (clustering of locations)</li> <li>Data collection and analysis</li> <li>Detection of energy saving measures</li> <li>Basic engineering of measures</li> <li>Cost analysis and profitability assessment</li> <li>Extrapolation of cluster results to all sites</li> </ul>
Result	<ul style="list-style-type: none"> <li>Very attractive saving potentials even if the client was already very advanced</li> </ul>

## EXAMPLE II - WISMUT GMBH, SCHLEMA



Project	Feasibility Study Renewable Energies
Duration	07/2014 - 03/2015
Client	Wismut GmbH
Content	<ul style="list-style-type: none"> <li>▪ Concept and Engineering of possible renewable energy solutions (PV, wind, hybrid)</li> <li>▪ Comparison to "conventional" solutions</li> <li>▪ Assessment of local legal framework</li> <li>▪ Cost analysis and financing schemes</li> </ul>
Results	<ul style="list-style-type: none"> <li>▪ Technical concept for an almost complete power supply by renewables at competitive cost level</li> </ul>

## EXAMPLE III - NORDWALDE COMMUNITY



<b>Project</b>	Refurbishment Concept Gangolf Primary School
<b>Duration</b>	07/2016 - 09/2016
<b>Client</b>	Nordwalde Community / BAFA
<b>Content</b>	<ul style="list-style-type: none"> <li>Technical refurbishment concept for Gangolf primary school, basic engineering</li> <li>New concept for rainwater management</li> <li>Cost analysis and profitability</li> <li>Financing schemes</li> </ul>
<b>Results</b>	<ul style="list-style-type: none"> <li>Highly attractive concept for complete refurbishment incl. advanced rainwater management concept</li> <li>Financial proposal for community with significant financial restrictions ("Nothaushaltskommune")</li> </ul>



EE ENERGY ENGINEERS GmbH

Office Gelsenkirchen:

Munscheidstraße 14 45886 Gelsenkirchen

Office Düsseldorf:

Roßstraße 92 40476 Düsseldorf

[info@energy-engineers.de](mailto:info@energy-engineers.de)

[www.energy-engineers.de](http://www.energy-engineers.de)

Member of TÜV NORD GROUP